



# LANDING FORTYTWO

THE LEADENHALL BUILDING  
LONDON

A PRIVATE VENUE IN RICHARD ROGERS' AWARD-WINNING POSTMODERN SKYSCRAPER. CLOSED TO THE PUBLIC, THE SPACE IS A BESPOKE OFFERING WITH ONE-OFF VIEWS TO THE FAR EDGES OF LONDON.

Angled at 10.62 degrees in order to protect views of major London landmarks, including St Paul's Cathedral and the Palace of Westminster, The Leadenhall Building sits within the bustling financial centre of London.

42





# VIEWS AND DESIGN-LED SPACE ON A NEW LEVEL



ABOUT US

01



## ABOUT US

Landing Forty-Two occupies the entire forty-second floor of the Leadenhall building in the City of London. At nearly 500 ft, it is the highest event space in the UK.

The Leadenhall Building, or 'Cheesegrater' is considered the late masterpiece of the British architect Richard Rogers. Its tapering profile was designed to preserve views of St Paul's Cathedral, which means access to the highest floors is extremely limited.

The venue is available for private use by invitation. Defined by clean architectural lines and a cool, minimal aesthetic, the space can accommodate up to 300 people.

The 'inside-out' steel structure of the building provides an uninterrupted architectural canvas for custom-built floorplans and bespoke events.



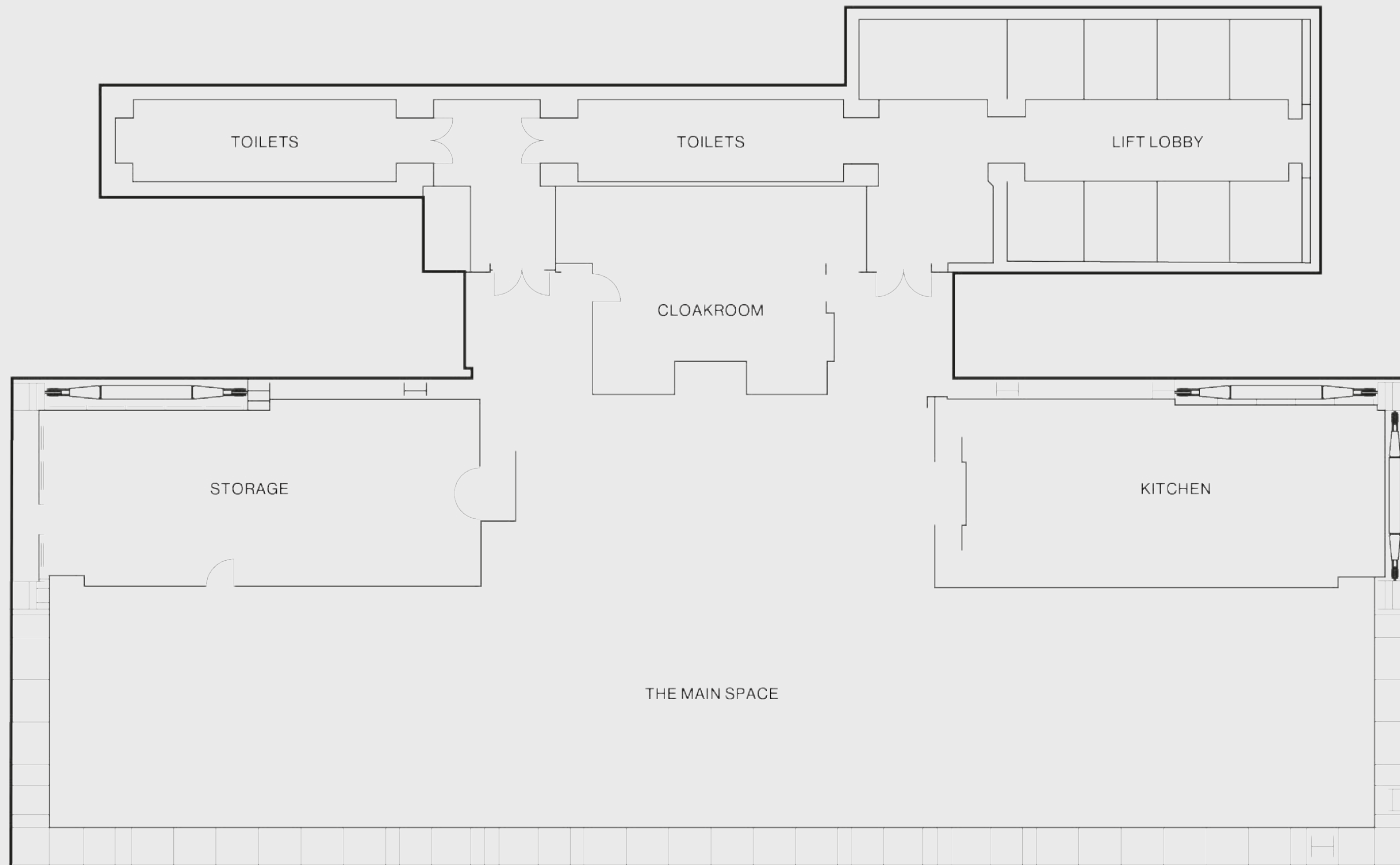
# A NEW PERSPECTIVE ON LONDON



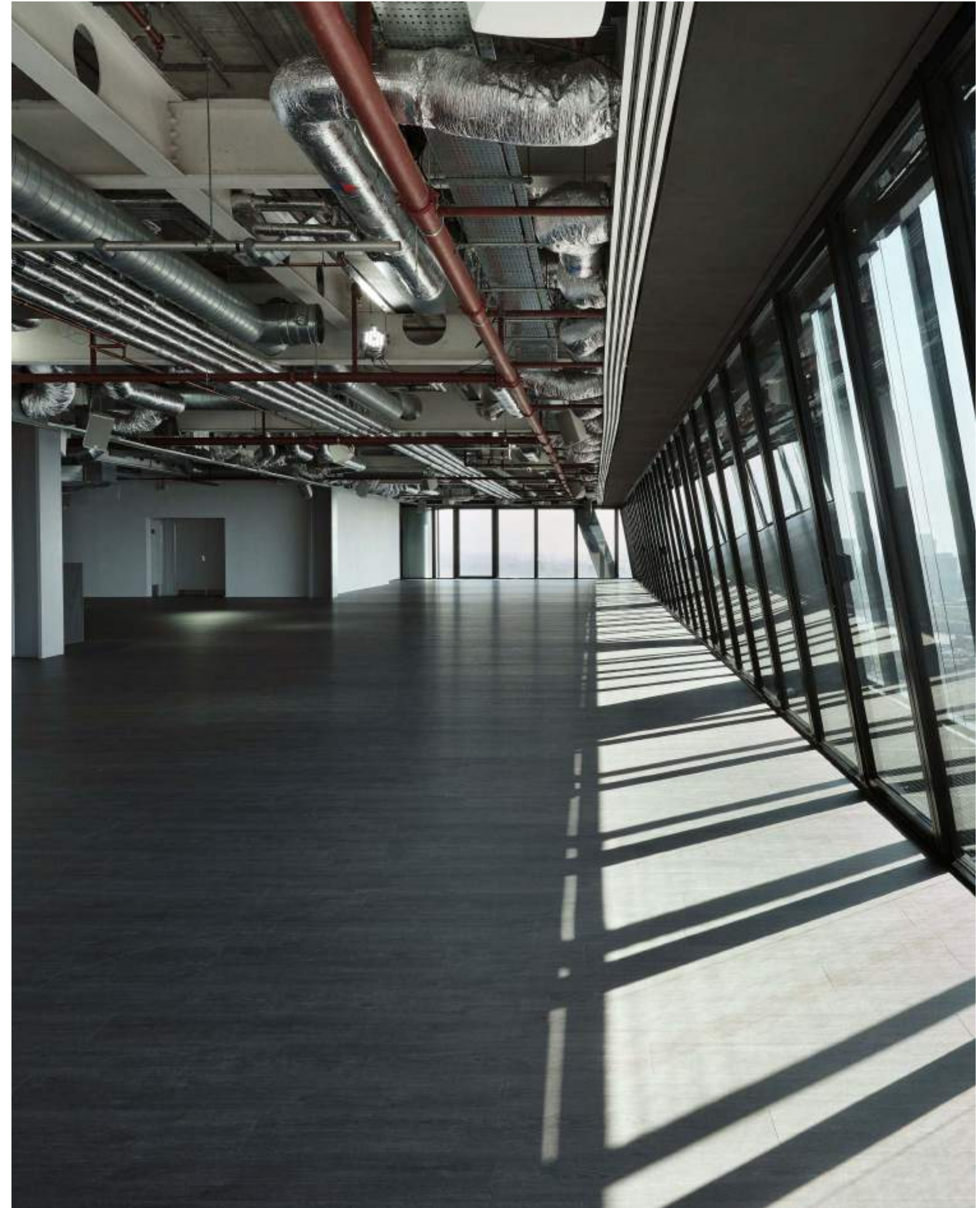


# THE SPACE

Landing Forty Two offers some of the best views in London, with wraparound floor-to-ceiling windows, and pristine architectural finishes. The event space occupies the entire forty-second floor of the building, and is fully customisable, from floorplan to furniture.







# SPECIFICATIONS

---

SIZE (FT)	500
L (FT)	153.8
W (FT)	25.6
H (FT)	8.2
STANDING CAPACITY	300
THEATRE CAPACITY	250
DINNER CAPACITY	220
CABARET CAPACITY	152

---

LOCATION

02



## LOCATION

Landing Forty Two, The Leadenhall Building, 122  
Leadenhall Street London, EC3V 4AB

Landing Forty Two is located on the 42nd floor of the Leadenhall Building on Leadenhall Street. Leadenhall Street is situated in the heart of the City and just a few minutes walk from Liverpool Street, Fenchurch Street, Bank and Monument Stations.

Access to the events floor is via the building's glazed external-facing high-speed lifts, which deliver guests to the venue in just over 30 seconds.

The space is easily accessible, five to ten minutes walk from Bank, Monument, Fenchurch Street and Liverpool Street stations.

# VIEWS. BY INVITATION ONLY

Re-define your next event or celebration, call us on  
+44 (0) 20 8498 4930, email [info@landingfortytwo.com](mailto:info@landingfortytwo.com)

Landing Forty Two, The Leadenhall Building  
122 Leadenhall Street London, EC3V 4AB